



ARMAN (1928-2005)

“La Nuit du Mikado (Van Gogh: Starry Night)”

1992

Accumulation of brushes and acrylic paint on canvas

Unique work

Signed on the lower right side on the edge

Referenced at the Arman Studio in New York under the number APA #: 8027.92.002

The artwork accompanied by its certificate of authenticity issued by the Arman Committee NYC

H. 55 in

W. 73 in

D. 5 in

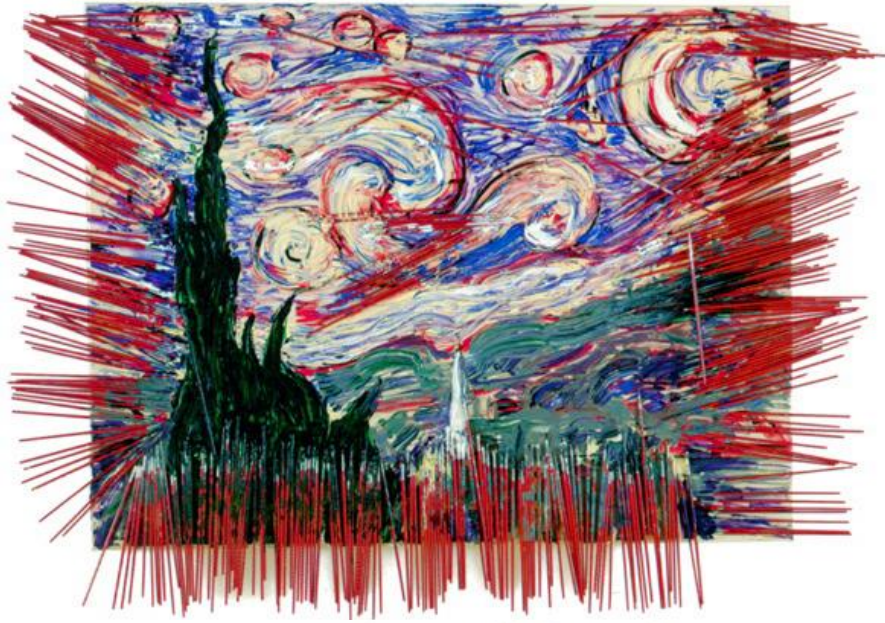


Vincent van Gogh,
La Nuit étoilée,
1889, oil
on canvas,
28.7 in ×
36 1/4 in

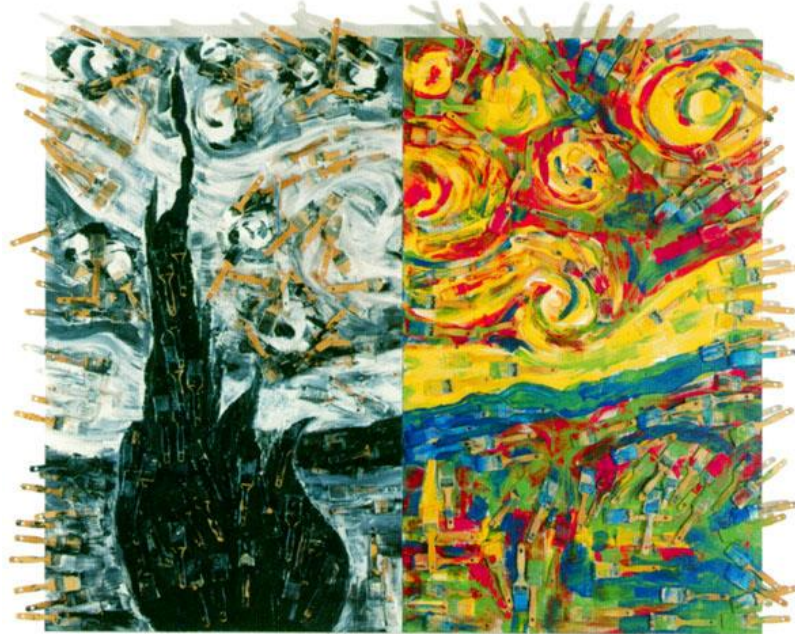
"*Starry Night*" is one of the most famous paintings by Dutch painter Vincent van Gogh. The painting represents what Van Gogh could see and extrapolate from the room he occupied in the asylum of the Saint-Paul-de-Mausole monastery in Saint-Rémy-de-Provence in May 1889. Often touted as one of the artist's masterpieces, the painting has now been housed at the Museum of Modern Art (MoMA) in New York City since 1941.

For the painter, "*the night is much more alive and richly colored than the day*". Thus, this work is based on the direct observations of Van Gogh and on his imagination, memories, and emotions.

Almost a hundred years after Van Gogh made one of his masterpieces, Arman decided to make a series called "*Starry Nights*". It was for him a return to basics, an exercise in style, the emergence of a will and discipline. Dazzled at a young age by Van Gogh's work, the artist never shied away from this influence. Arman also signs his works with his first name in homage to Van Gogh. Thus, Arman chose between different masterpieces of the Dutch artist "*Starry Night*" to realize this series of tribute works.



Arman,
Nuit encadrée,
1995,
accumulation of
brushes and
acrylic on
canvas,
57 x 39.3 in



Arman,
Double nuit,
1995,
accumulation of
brushes and
acrylic on canvas,
82.6 x 104.3 in



Arman,
*Après la nuit,
l'aube*,
1994,
accumulation of
brushes and
acrylic on
canvas,
48 x 72 in